

SCHOOL OF PUBLIC POLICY CHIANG MAI UNIVERSITY

MA Handbook 2022

March 2022 updated

School of Public Policy, Chiang Mai University

239 Huay Kaew Road , Muang District,
Chiang Mai 50200, Thailand
www.spp.cmu.ac.th



Telephone:

+66 98 815 3444 (SPP)

Email: spp@cmu.ac.th

chirada.na@cmu.ac.th (Degree Programs Manager)

lakhayaporn.th@cmu.ac.th (Graduate Admissions)

SCHOOL OF PUBLIC POLICY, CHIANG MAI UNIVERSITY

School of Public Policy, Chiang Mai University (SPP, CMU) is a public policy graduate school, concurrently operating as a cutting-edge research and consulting organization, committed to solving complex and wicked public problems with inclusive, innovative, progressive, and sustainable policy solutions. The School was setup based on the idea that we need to tackle complex and wicked problems that are of public nature by not relying on only certain disciplines but rather by using multiple disciplines to define the problems and think of the solutions to these problems.

SPP, offering academic degree programs at the Master and PhD levels, is propelled by the notion that civic and civil challenges must be confronted by not solely relying on fixed disciplines; rather, multiple branches of knowledge should be employed for decoding the roots of problems and cultivating effective solutions. What is unique about our curriculum is that it focuses distinctively on data analysis (quantitative) and policy communication (qualitative) aspects of policy analysis. While drawing faculty members from over 10 departments across the university: Economics, Political Science, Engineering, Business and Administration, Architecture, Commerce, Social Science, Geography, Pharmaceutical, Public Health, and Science. The foundational essence supporting this topical issues based platform is that our research work is not merely about crafting concepts and theories. Our products concentrate on tangibly influencing public policies in ways that generate practical implications for changing the laws, issuing new regulatory systems, and crafting incentives that encourage behaviors which holistically serve the public good.

SPP is one of a few public policy schools explicitly operating within the framework of the 2030 United Nations Agenda for Sustainable Development. This Agenda includes seventeen sustainable development goals (SDGs), addressing everything from poverty to climate action. While all policy schools selectively focus on SDGs, SPP's research work and training emphasizes peace and justice that is backed by strong and non-discriminatory institutions.

Pursuing Postgraduate Programs at Chiang Mai University School of Public Policy

Choosing whether and where to pursue advanced academic degree is a significant and weighty life decision. People do this for different reasons. A Master's Degree is generally sought as a means of framing and credentialing accumulated life experience and then leveling-up one's professional positioning and salary. A PhD, while career-advancing, is about pinpoint developing an in-depth knowledge on topic of keen interest, contributing to an existing body of knowledge, or perhaps even fulfilling one's higher purpose.

Regardless of need or motivation, a multitude of logistical aspects must be considered when selecting an academic program. Perhaps most important is to what degree has the academic faculty engineered its program in-terms of furnishing the knowledge and resources required for students to meet their goals. We at School of Public Policy, Chiang Mai University well understand this dynamic. While SPP's public policy degree programs at the Master and PhD levels vary, our interdisciplinary team of practitioners and academics is committed to tailoring a track that is most suitable for those who are interested in enrolling in our programs.

It is noteworthy that a truly unique aspect of SPP's program is that while we, alike other public policy schools, teach fundamentals of politics, public administration, economics, and social science based theories, SPP uniquely blends society-based qualitative and science-supported quantitative methodology. Focused on deliberative processes, we additionally educate students about governance-based negotiation processes. This is while exposing them to the social narratives connected with the root issues, and the actors, of development phenomena and their linked public problems.

SPP acknowledges that policies design is not just about crafting the best or soundest policies. We question how are the societal narratives integrated into the policy. This pertains to the language of public policy, which involves awareness of the influence and leverage of language, mindfulness regarding the layered power structures inside languages, and insight into how policies branding makes a difference in strategy effectiveness. Politicians, campaigners, activists, and others working with the public need to know about this, particularly considering that storytelling to different societal contexts requires different language levels.

SPP's students grow toward an acquired capacity for seeing critically beyond known facts. They acquire comprehension about the inter-linkages of deep-rooted public problems and how we are all part of this global dynamic. Infused with empathetic deliberation skills necessary for discussing complex public issues, they become professional *pracademics*. Graduates move forward in life equipped with insight into and mastery about how sound public policies can be utilized for inclusive, innovative, progressive, and sustainable solutions to the most prominent public problems.

Academic Excellence and Progressive Environment

School of Public Policy is situated in a very livable city of Chiang Mai that is within 3 hours of flying distance from major cities in the mainland Southeast Asia region. The School is situated 700 km. (435 miles) north of Bangkok, at Thailand's second capital city of Chiang Mai. Aside the Lee Kuan Yew School of Public Policy in Singapore, SPP is the only autonomous School of Public Policy in ASEAN that offers international degrees for Master and PhD in Public Policy. SPP considers this locale, dynamically comprised of ancient and modern paradigms, an 'urban lab' for comprehending the melting pot of worldwide urbanization phenomena that are also ensuing throughout Asia's secondary (non-mega) cities.

SPP is offering this urban learning hybrid-style classroom to its students available both on-site and online with modern IT/ICT technologies and software. While observing the marvels transpiring in this region, they are exposed to the root issues, and the actors, connected with this diversified spectrum of development phenomena. SPP is not promoting a Thailand perspective, or even the Southeast Asia standpoint. An urban problem is an urban problem. An education problem is an education problem. Inequality is inequality, regardless of country or nationality. We are advocating for the emergence of a global perspective. We are hence integrating into our team those who are open-minded to transform their mindsets and worldview, in ways that can also be extrapolated and applied elsewhere.

School of Public Policy is located in Chiang Mai University main campus at 239 Huay Kaew Road in downtown Chiang Mai city. With modern facilities, we aim to be internationally recognized in creating and improving the quality and livelihood of the students. At the newly renovated building, situated nearest to CMU's Suthep-Road front gate, SPP benefits from modern facilities with reliable internet connection and

public spaces ranging from modern hybrid conference rooms, classrooms, auditoriums, exhibition halls, security system, food halls and canteens, coffee shops, recreation spots and parking area.

Here at Chiang Mai University, we are determined to become a high standing academic and professional institute with a mission to produce graduates that is beneficial to society as a whole. The university aims to be a 'Green and Healthy University' while supporting Lanna cultural conservation and sustainable economy development. With highest standards for facility services and physical resources management, the university promotes sustainable development of “green and clean” campus with abundant physical resources and supporting environment conducive to productive teaching, learning, and researching. We hope to support learners' lifelong learning and prepare them to enter the rapidly changing society with equal educational opportunities and with the principle of academic freedom while adhering to the morals and virtues.

OBJECTIVES OF SPP GRADUATE PROGRAMS

- Offering a practical academic degree program at the Master level that teach fundamentals of politics, public administration, economics, and social science based theories while uniquely blend society-based qualitative and science-supported quantitative methodology.
- Training scholars and practitioners in skills related to public policy including policy-making, policy analysis, policy communication, and policy advocacy. Focused on deliberative processes, we educate about governance-based negotiation processes while exposing them to the social narratives connected with the root issues, and the actors, of development phenomena and their linked public problems.
- Production of public policy specialists that are nationally and internationally recognized who generate top quality research products and platforms, with cross-disciplinary approach founded on reliable information that enhance public policy decisions.
- For students to acquire the capacity for seeing critically beyond known facts with comprehension about the inter-linkages of deep-rooted public problems and global dynamic.

Infused with empathetic deliberation skills necessary for discussing complex public issues, they become professional pracademics.

- For graduates to move forward in life equipped with insight into and mastery about how sound public policies can be utilized for inclusive, innovative, progressive, and sustainable solutions to the most prominent public problems.
- SPP aims to build core competencies of our scholars, staffs, and students in accordance to guidelines by the National Association of Schools of Public Affairs & Administration (NASPAA), in which we seek international accreditation. The competencies are as follows;
 - Lead & Manage in Public Governance - The ability to lead and manage in public governance: energize people, mobilize resources in the pursuit of publicly defined policy goals.
 - Participate in & Contribute to the Policy Process - Participation in and contribution to the policy process: participate substantively in the design, implementation, and evaluation of public policy.
 - Analyze, synthesize, think critically, solve problems, and make decisions - The ability to analyze, synthesize, think critically, solve problems and make decisions: contribute ethically to decision-making through appropriate use of evidence that recognizes stakeholders' competing values.
 - Articulate and apply a public service perspective - The ability to articulate and apply a public service perspective: demonstrate a commitment to improving social welfare and social justice.
 - Communicate & Interact Productively with a diverse and changing workforce and citizenry - The ability to communicate and interact productively with a diverse and changing workforce and citizenry: professionally represent one's organization to stakeholders orally & in writing.

COURSE SYNOPSIS AND METHODOLOGY

a. Study plan

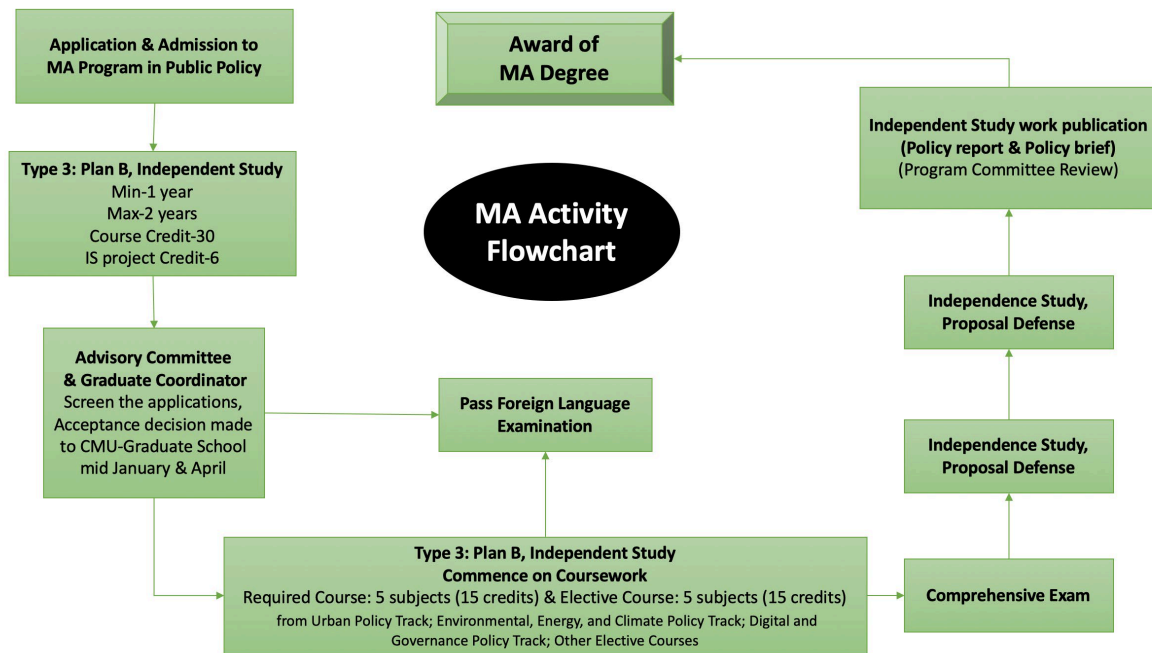
Master of Arts in Public Policy is a 36-credit program, consisting of five compulsory courses with focus areas including governance, urban policy, environmental policy, and climate change. The program is structured to be completed within 1 year, with additional one year grace period. Course works and academic activities provide training in critical thinking, public policy analysis, design thinking, and futures thinking.

The available option for the MA in Public Policy for academic year 2022-2025 is the coursework with independent study producing policy report and policy brief as a requirement for graduation. Upon application in CMU admission system, it is known as the MA-Type 3 Plan B (Independent Study). In terms of specialization, student can choose a focus-track in 'Urban Policy,' 'Environmental, Energy, and Climate Policy,' or 'Digital Society and Governance Policy' track.

Requirement for Graduation:

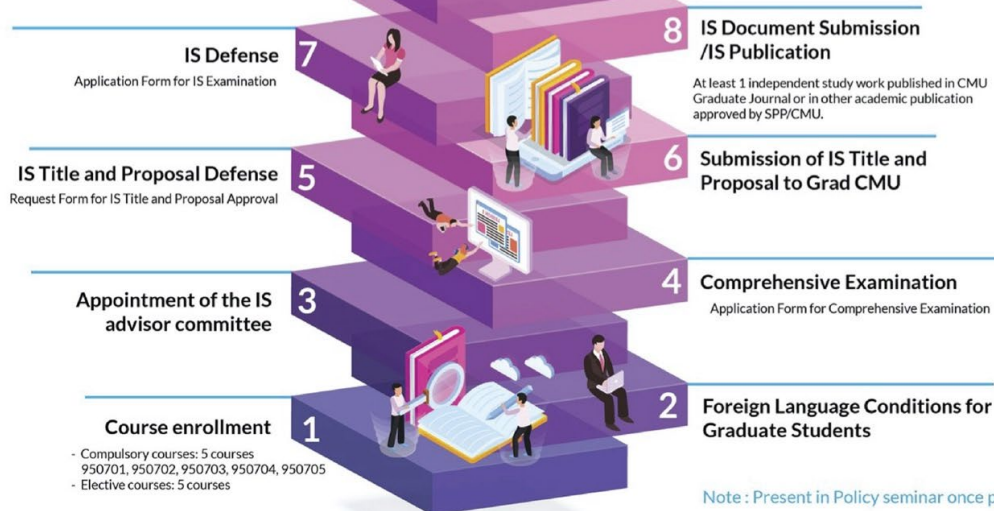
At the final semester that the student is going to fulfill all courses and conditions specified in the curriculum, the student must report him/her self to the registration office for graduation expectation, endorsed by general advisor or thesis major advisor, then also report to the affiliated academic sector. Student who is nominated for graduation a degree or diploma must fulfill all the following conditions

1. Having studied courses and fulfilled all the conditions specified in the curriculum.
2. Having received grade point average of all courses at least 3.00 and grade point average of courses in specific field at least 3.00, except program with dissertation or master's thesis only.
3. Having passed a foreign language conditions by examination or any other methods specified by the graduate school
4. Having passed comprehensive examination, for type 3 and type 4 master's student and for the program that has specified.
5. Having passed thesis evaluation examination. The dissertation (doctoral program) must be composed in English language or any other language approved by the graduate school, as the individual case may be.
6. Thesis result must be published or at least accepted to publish in a journal, media, printed matter, or registered a petty patent or patent, or in other forms accepted by the field of study with the approval of the graduate school for each level and/or type of study.
7. Having qualifications complying with the university regulation on student's honor and glory determination to graduate a degree or diploma of the university.
8. Being honest and faithful with morality and ethics, by righteously and legally creation of work based on facts without any biasing, making up or false data, violating rights, stealing, copying, imitating or repeating (plagiarizing) works of the others.



SPP Student Journey MA Flow (Type 3, IS)

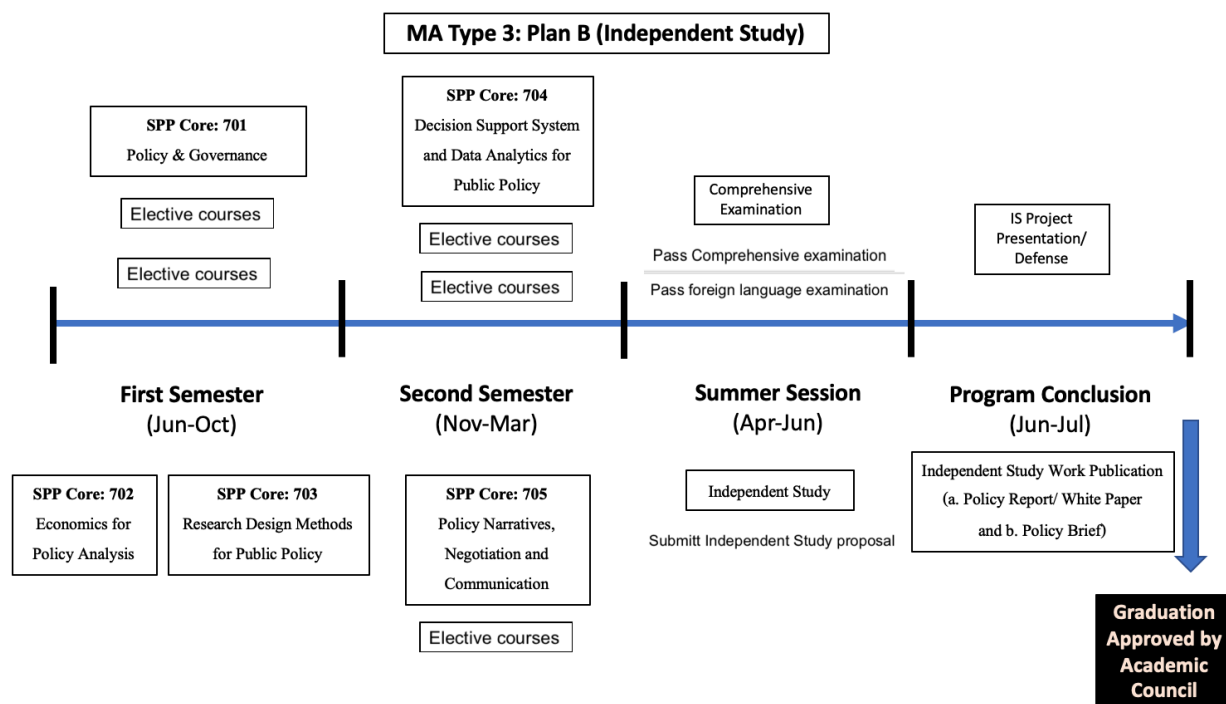
Request of Graduation



Note : Present in Policy seminar once per year

As of 7 January 2022

Study Plan of Master of Arts in Public Policy (Plan B)



24395131 Type 3 (Plan B)

Degree Requirement : a minimum of	36
A. Course work : a minimum of	30
1. Graduate Courses : a minimum of	30
1.1 Field of Concentration Courses : a minimum of	30
1.1.1 Required Courses	15
950701 SPP 701 Public Policy and Governance	3(3-0-6)
950702 SPP 702 Economics for Policy Analysis	3(3-0-6)
950703 SPP 703 Research Design and Methods for Public Policy	3(3-0-6)
950704 SPP 704 Decision Support System and Data Analytics for Public Policy	3(3-0-6)
950705 SPP 705 Policy Narratives, Negotiation and Communication	3(3-0-6)
1.1.2 Elective Courses : a minimum of	15
Students may select courses from any tracks but they will be considered having specialization in a specific track when they choose at least 9 credits from the same track. Students can also choose from any courses offered by the university with a recommendation and an approval of the program Committee	
1.1.2.1 Urban Policy Track	
950711 SPP 711 Fundamentals in Urban Studies under Global Perspective	3(3-0-6)
950712 SPP 712 Urban Planning and Design for Policy Makers	3(3-0-6)
950713 SPP 713 Urban Habitation and Housing Policy	3(3-0-6)
950714 SPP 714 Sustainable Urban Management and Governance	3(3-0-6)
950715 SPP 715 Sustainable Cities	3(3-0-6)
950716 SPP 716 Urban System and Techniques for Policy Makers	3(3-0-6)
950717 SPP 717 Cities Sports and Tourism	3(3-0-6)



1.1.2.2 Environmental, Energy, and Climate Policy Track					
950721	SPP	721	Environmental Policy		3(3-0-6)
950722	SPP	722	Global Climate Policy		3(3-0-6)
950723	SPP	723	Climate Mitigation and Adaptation Policy		3(3-0-6)
950724	SPP	724	Energy Policy		3(3-0-6)
950725	SPP	725	Natural Resource Management		3(3-0-6)
950726	SPP	726	Natural Disaster Management		3(3-0-6)
1.1.2.3 Digital and Governance Policy Track					
950731	SPP	731	E-Governance		3(3-0-6)
950732	SPP	732	Digital Society and Governance		3(3-0-6)
950733	SPP	733	Intellectual Property Management		3(3-0-6)
950734	SPP	734	Social Media and Public Policy		3(3-0-6)
950735	SPP	735	ICT Literacy for Policy Makers		3(3-0-6)
950736	SPP	736	Virtual Sphere and Public Policy		3(3-0-6)
1.1.2.4 Other Elective Courses					
950741	SPP	741	Systems Modeling for Public Policy		3(3-0-6)
950742	SPP	742	Gender and Development Policy		3(3-0-6)
950743	SPP	743	Environment, Social and Health Impact Assessment		3(3-0-6)
950744	SPP	744	Smart Evaluation for Public Program and Policy		3(3-0-6)

1.2 Other Courses

with a recommendation and an approval of the program Committee

1.2.1 Required Courses

None

1.2.2 Elective Courses

with a recommendation and an approval of the program Committee

2. Advanced Undergraduate Course

None

B. Thesis					6
950798	SPP	798	Independent Study		6

C. Non-credit Courses

1. Graduate School requirement

a foreign language

2. Program requirement

None

D. Academic Activities

At least 1 independent study work or part of independent study work must be published in CMU Graduate Journal or in other academic publication approved by the field of study and the graduate school with the student as the first author, which can be policy report or white paper.

E. Comprehensive Examination

Having submitted a request form to the Graduate School, approved by general advisor, students must then complete a comprehensive examination.

b. Course Content

Course Code	Course Description
Required Courses	
950701	<p>Public Policy and Governance</p> <p>The importance of public policy, Introduction to wicked & complex problems, Problem identification and framing a scope. Public policy processes in theory and reality, Decision-making processes for policy-makers. Policy design and branding, Policy eco-systems and subsystems, Political implications in public policy, Stakeholder analysis and management, Policy management and administration. Sustainable development goals and public policy</p>
950702	<p>Economics for Policy Analysis</p> <p>Introduction to Economics and Public Policy, Development Economics and growth policy. Behavioral Economics for public policy. Economics of governance. Fiscal and monetary policy. Economic recession and financial crisis. Project feasibility and project evaluation. Economic impact assessment</p>
950703	<p>Research Design and Methods for Public Policy</p> <p>Nature of applied science and public policy, Designing social research. Research questions and purposes, Strategies for answering research questions. Concepts, theories, hypotheses, models. Literature reviews. Sources and selection of data. Data collection techniques, Data analysis techniques, Research validity, reliability, and ethics, Writing up research. Sample research designs in public policy</p>

950704	Decision Support System and Data Analytics for Public Policy Introduction to Decision Support System and Data Analytic, Decision Making Theory, Decision Support System with Spread Sheet, Multi Criteria Decision Making (MCDM) in Public Policy: Analytic hierarchy process. Data Analytic and Intelligence System, Advanced Intelligent Systems and Guest Lecture: The case of People Express
950705	Policy Narratives, Negotiation and Communication Introduction to policy narratives. Role of policy narratives in policy processes. Public policy and discourse analysis, Politics of policy narratives, The strategic use of policy narratives in practice, Public policy and negotiations. Public policy and negotiations in practice. Policy communication and branding. Policy communication in the era of information technology
Elective Courses	
Urban Policy Track	
950711	Fundamentals in Urban Studies under Global Perspective Introduction: the brief history of urban studies. The fundamental concepts: from technical to multidisciplinary. The recent issues in urban studies. The new urban crisis and opportunities. Classic case studies

950712	<p>Urban Planning and Design for Policy Makers</p> <p>Introduction to Urban Planning and Design, and Planner and Designer Roles, Urban Definition, Human Settlements, Urban Origins, Urban Evolution, Urban Culture and Society, Urban Quality of Life in Urban design, Public Space and Public Life, Cities in the Global Context, Global Cities, Global Economy and Localism, History of Planning, Models of Planning, Planning Types and Styles of Planning, Conflict of Interest, Priorities, Debates in Planning, Planning Process, Levels of Planning and Locational Theory, Planning into Practice and Implementation</p>
950713	<p>Urban Habitation and Housing Policy</p> <p>Housing Definition, its role and stakeholders, Housing as driver of urbanization and shaper of neighborhood. Slum and intervention into housing, Housing and discrimination. Trends shaping housing, Planning and policy interventions: community land trust, inclusionary zoning, creating diverse communities, and new urbanism. Demographic shifts, mismatches housing supply, deficient resources, and climate change</p>
950714	<p>Sustainable Urban Management and Governance</p> <p>Course introduction to Sustainable Urban Management and Governance, Project and Process Management for Urban Development Theory and Practices, Sustainable urban development Concept and Practices, Different indicators of sustainability in evaluations of urban development projects, Elaborate and motivate forms of collaboration between important stakeholders for the development of sustainable solutions in the urban environment, Knowledge and arguments associated with the subject matter in dialogue with various parties</p>

950715	Sustainable Cities Study of relationship between Sustainable Components and Urban Development, Typology of Urban Development, Urban Architecture and cultural Landscape, Contemporary Urban Architecture and City Development, Sustainable Concepts, Strategies, and Guidelines for Urban Development, Land Use and Transportation Planning, New Urbanism and Smart Growth, Transit Oriented Development and Transit Design, Implementation of Design concepts for Sustainable Cities
950716	Urban System and Techniques for Policy Makers Introduction to System and Complexity: Walking and watching cities. Social System Dynamics: Population and Economic, and City growth and urban models, Physical System Dynamics: Water, Transport, Energy, etc., Scenarios and scenario analysis: Game theory, simulation, and complex behaviors
950717	Cities Sports and Tourism City and the World today, City life. Traveling, and Abilities, The City as a Special Place, Sports and Urban Life, Sports, Public Place, and City Revitalization, Arts in the City, Museum and Tourism, Neighborhoods, Communities, and Suburbanization, City dwellers, Travelers, and the Tourists in Global city, Sports, Tourism and City Development in the Global Age
Environmental, Energy, and Climate Policy Track	

950721	<p>Environmental Policy</p> <p>Introduction to Environmental Politics and Policy, History of Global Environmental Change, Environmental Impact of human Activity, Seminar on Global Environmental Change and Case study, Institutional Setting of Environmental Policy, Air Pollution and Policy, Water Pollution and Policy, Ground Pollution and Policy, Biodiversity and Forest Conservation, Seminar on Pollution Control and Environmental Conservation, Environmental Law and Institution, Environmental Economic Tools, Environmental Risk Assessment, Comparing Environment Policymaking around the World, Energy and Environment</p>
950722	<p>Global Climate Policy</p> <p>Introduction to Climate Change and Its Relationship with Science and Society, The Emergence and Politicization of Climate Science, Institutionalization and Governance of Climate, Economic and Development Challenges of Climate Change, Lay Worldviews, perceptions and knowledges of Climate Change, Media Reporting of Climate Change, The Future Roles of Climate Experts, Institutions and the Public</p>
950723	<p>Climate Mitigation and Adaptation Policy</p> <p>Climate Mitigation Policy: History and Our Scenarios, Emission Trading Scheme - Cap and Trade Approach, Greenhouse Gas and Carbon Accounting, Climate Mitigation Program and Urban Development, Examples - Reducing emissions from deforestation and forest degradation, Carbon Tax Scheme, and nationally determined contributions (NDCs), Carbon Market and Finance Workshop, Conceptual History and Policy Framework of Climate Adaptation, Adaptation, Vulnerability, Disaster Risk Reduction, Resilience and</p>

	Transformation, Mainstreaming Climate Adaptation in Development, Overcoming Barriers to Adaptation: Thresholds, Values and Governance, Workshop and Presentation: Designing Policy for a Low Carbon and Resilient Community
950724	Energy Policy Introduction Energy system and development. Imbalance resource allocation. Energy supply. Energy demand. Energy markets. Securing energy system and policy measures. Policy and planning of energy efficiency and conservation. Assessing energy policy
950725	Natural Resource Management Historical / current issues and practices, Soils, Water, Basic ecological principles, Forest ecology and management. Coastal ecology and management. Global change biology. Wildlife ecology and management. Ecosystem goods and services
950726	Natural Disaster Management Concepts of natural disasters and these multiple related causes and impacts. Concepts of integrated natural disaster management. Principle and process of natural disaster management. Analyses of potentials and limitation of natural disaster monument from Thai cases. Synthesis from cases studies for natural disaster management policies at national to community
Digital and Governance Policy Track	



950731	<p>E-Governance</p> <p>An overview of e-Governance, Roles of ICT in good governance. Benefits of e-Governance, Types of e-Governance, Models of e-Governance, Social media and governance. Policy framework for facilitating in e-Governance, Current issues and trends in e-Governance, Case studies of e-Governance in practices</p>
950732	<p>Digital Society and Governance</p> <p>Overview of digital society, Internet of things in the networked world. Roles of big data in society, Smart city development, Privacy and digital society, Theorising digital society. Current issues and trends of digital society, Case studies of digital society practices</p>
950733	<p>Intellectual Property Management</p> <p>Creations of Intellectual Properties, Acquisition of Intellectual Properties, Modern Intellectual Property Rights- Copyright and Related Rights, Patents, Trademarks, Trade Secrets, Geographical Indications, Layout-Designs of Integrated Circuits, Plant Variety Protection, Traditional Intellectual Property Rights - Traditional Knowledge, Folklore, Biological Diversity, Planning for Intellectual Property Rights, Misuse of Intellectual Property Rights, Monopolization using Intellectual Property Rights, Dispute Resolutions and Litigations of Intellectual Property Rights, Intellectual Properties and International Trades</p>

950734	<p>Social Media and Public Policy</p> <p>Globalization, Modern technology and the political, economic and social changes, Online social media and the political participation in the digital communication age, The case study of online social media and the civil politics in Thailand by the instructor, The case study of online social media and political participation by the student. Using social media for public policy making and public relation. The case study on online social media and the IOT in for bureaucratic administration, Presenting social media innovation for policy making process, Conclusion and trend on the study of online social and public policy making</p>
950735	<p>ICT Literacy for Policy Makers</p> <p>Basic knowledge of Information Technology, Globalization and Information Technology, Practice using software to aid brainstorming activity on the Public Policy making research topic, Practice using software and mobile device to aid field data collecting, Practice using software to aid qualitative data analyzing. Practice using software to aid quantitative data analyzing, Creating citation with computer software. Creating e-Research by using computer software, Presenting research finding in the form of Webinar, Presenting research finding in the form of Online Video Presentation</p>



950736	<p>Virtual Sphere and Public Policy</p> <p>Definition, background and development of “virtual reality” and “virtual sphere”, Approaches to know how to divided public and private in virtual sphere. Political Economy policy and Communicative capitalism, state and surveillance policy in democracy of public sphere, Virtual cultural policy of good sharing and collective experiences of sensation, Formulation policy coping with conflicts and resistance, Case Study of European and US policy - making for virtual sphere, Case Study of Middle East policy - making for virtual sphere, Case study of China policy -making for virtual sphere, Case Study of Southeast Asia policy - making for virtual sphere</p>
Other Elective Courses	
950741	<p>Systems Modeling for Public Policy</p> <p>Introduction to System Modeling for Decision Makers, System Thinking in Public Policy and Static Modeling Method Concepts : Problem definition and model purpose, building theory with causal loop diagrams. System Dynamic Modeling: Building a model, Dynamics of stocks and flows, linking feedback with stock and flow structure, and Analyzing Systems and Creating Robust Policies, Guest Lecture: Modeling in A Practical World, Interactions of Operations, Strategy, and Human Resource Policy: The case of People Express</p>

950742	Gender and Development Policy From women to gender: development of the gender and development studies, Sex, Gender, Gender's role, and gender equality. Theoretical perspectives of gender and development. The United Nations' policy on gender equality (the Convention on the Elimination of All Forms of Discrimination Against Women and the Sustainable Development Goals), Education policy, Health/maternal health policy, Work policy, Legal and civil rights, Property rights. Society and culture, state mechanism for promoting women's rights
950743	Environment, Social and Health Impact Assessment Background, concept, law, policy and the steps of environment impact assessment (EIA), social impact assessment (SIA) and health impact assessment (HIA), screening, scoping, impact analysis, mitigation, impact management, reporting, evaluation, decision Making and case study, also integration between EIA, SIA and HIA
950744	Smart Evaluation for Public Program and Policy Policy dynamics and logics of evaluation appropriateness, Ethical dimensions of policy evaluation. Reframing policy problems for smart evaluation. Policy research and tools for smart policy evaluation. Case study of smart evaluation for policies and programs
950799	Master's Thesis
950798	Independent Study



IMPORTANT DATES IN ACADEMIC YEAR 2022

Activity	Date
First Semester 2022	
First day of Semester/Classes	20 June 2022
University services enrollment for graduate students 1/2022	20 June – 19 July 2022
Last day of Classes for Semester	21 October 2022
Final examinations	24 October – 6 November 2022
First day of Semester break	7 November 2022
Final day for grade submission	15 November 2022
Announcement of grades	18 November 2022
Second Semester 2022	
Course adding/dropping, course enrollment	19 – 27 November 2022
First day of Semester/Classes	21 November 2022
University services enrollment for graduate students 2/2022	21 November – 20 December 2022
Course withdrawal WITHOUT receiving grade W	19 November – 2 December 2022
QE and Presentation of Research Proposal (PhD Type 1.1)	By end of first Semester
Enrollment Fee Payment 2/2022	5 – 9 December 2022
Last day of Classes for Semester	17 March 2023
Final examinations	20 March – 2 April 2023
First day of semester break	3 April 2023
Final day for grade submission	10 April 2023
Announcement of grades	13 April 2023
Summer Session 2022	
Enrollment	3 – 7 April 2023
Course adding/dropping, course enrollment	10 – 16 April 2023
University services enrollment for graduate students Summer/2022	17 April – 26 May 2023
First day of Summer classes	17 April 2023



Enrollment Fee Payment Summer/2022	24 – 28 April 2023
Course withdrawal receiving grade W	24 April -12 May 2023
QE and Presentation of Research Proposal (PhD Type 2.1)	June 2023
Last day of Classes	26 May 2023
Final Examinations	29 May – 1 June 2023
First day of Summer session break	2 June 2023
Final day for grade submission	7 June 2023
Announcement of grades	9 June 2023
Graduation approval by academic council	21 June 2023

For update on the recent Academic Calendar, please visit

<https://www.reg.cmu.ac.th/webreg/en/academic-calendar/>

SCHOOL OF PUBLIC POLICY, CHIANG MAI UNIVERSITY

2022 ONLINE LEARNING GUIDANCE

As the world abruptly shifts toward comprehensive digital transformation in response to the COVID-19 pandemic; there is a need to fully embrace on opportunities for online learning. The School of Public Policy stands ready to establish clear (online) classroom norms and provide training to ensure technical knowledge. This is to ensure that we provide a fulfilling and interactive learning experience for our students.

This guidance is intended to provide some practical advice and best practice on online learning norms. The document is adapted from the Oxford University's Convenor guidance online teaching TT20 document, which they developed in conjunction with a number of Oxford course convenors and their students.

Classroom Guidelines And Norms For Students

1. The technology (such as Zoom, Microsoft Teams, Google Hangouts Meet, Skype etc.) is not the main barrier to learning; rather, getting the classroom culture right is what matters most. Be mindful that everyone's presence and attentiveness will affect the learning of others. Come prepared having completed all pre-class assignments. Be timely, be engaged, and avoid disturbances.
2. Log-in to your class 20 minutes before the start time to allow the online learning facilitator (Teaching Assistant/ Administrative Assistant/ Instructor) to take the rollcall and to resolve any possible technical issues. We need to be especially considerate of these norms given the physical distances we have to bridge.
3. Instructor and students are required to maintain an individual video presence at all times to access the virtual classroom (one video feed per student), unless excused by the TA/AA/online learning facilitator (and for connectivity reasons only). This means you should access the virtual classroom from a quiet space, with minimal distractions such as food, drinks, etc.
4. To be respectful to others, you should dress in smart casual or as you would for an in-person class session. If using a virtual background, please keep it plain. Should you need to leave the session midway for any reason, disconnect and redial when ready — any blank screens will be disconnected by the TA/AA/ online learning facilitator. Attendance is monitored throughout the class session, with randomized screenshots to keep records of those attending the class. Failure to attend 80% of

classes in any course, without reasonable excuse, means that student may not be allowed to complete the course.

5. Where possible, use headphones and an associated microphone rather than room speakers — this mitigates echoes for others. Keep your microphone muted unless you are called to speak by the instructor.
6. Use the “raise hand” button in the Zoom or MS Teams function to be called — instructors will be trained to become familiar with this feature. When you are called on or if your point or question is no longer relevant, please “lower” or click stop your raised hand.
7. Avoid using the chat feature in the platform, except for communicating about urgent technical issues or when asked to by the instructor. Similarly avoid parallel conversations on Line or WhatsApp, etc. Stay away from email as per norm to focus on the classroom activities. If you have your pre-readings on your computer, try to access them via a second screen or device, so that your primary screen is dedicated to the Zoom/ MS Teams learning platform or whatever is the classroom platform.
8. Virtual classroom access is only for current CMU-SPP students and others expressly authorized by the CMU-SPP programs — any unauthorized sharing of the link and passwords can result in immediate removal from the online platform and referral to University disciplinary proceedings.
9. To preserve confidentiality and to allow for an authentic learning experience, classes will not be recorded as a default by the CMU School of Public Policy, and students are not permitted to record them either — any violation of this policy can result in immediate removal from the online platform and referral to University disciplinary proceedings. Instructors retain the discretion to relax this policy but they must secure the consent of all individuals being recorded.
10. This list of norms is a living document — do write to your instructor, copying spp@cmu.ac.th, with constructive suggestions for ways in which these norms can be made more effective. Such suggestions, if any, should be made after class, not during it.

FINANCIAL INFORMATION AND SCHOLARSHIPS

The School of Public Policy was established as an internal academic institute of Chiang Mai University, according to the University Announcement title ‘the Establishment of Internal Academic Unit of Chiang Mai University B.E. 2560’ dated 11 September 2017.

Tuition Fee:

For both domestic and international students, the one-year program costs 330,000 Thai Baht, payable in two installment (as per semester). Upon detailed confirmation of any scholarship you may be granted; SPP will assist you in scheduling appropriate fee payment.

The tables below provide the breakdown of program costs and living expenses: tuition fee payable per semester, living expenses as per month. The estimates were derived from Chiang Mai University Presidential Scholarship scheme, which provide information about allowances for Master Level ranging from Tuition and Fees, Insurance, Living, transportation and accommodation allowances, Air ticket from/to home country and CMU.

Master in Public Policy (All Types)

CMU-SPP Annual Cost Items			
As of Jan 2019		Rate 1 USD = THB 31.9	
Education Program: MA in Public Policy		USD	Baht
Exam Fee (IELTS English test)		226	7,200
Application Fee		28	900
Tuition Fee (the whole program, payable in semester)		10,345	330,000
Insurance (Health)		188	6,000
Thesis publication cost		188	6,000
Field Trip/Research/Project		470	15,000
Books and Equipment		376	12,000
Total		11,821	377,100
Cost of Living:			
Rent (4k/mth)		1,505	48,000
Bill & Electricity (1k/mth)		376	12,000
Meals (5k/mth)		1,881	60,000
Transportation (2k/mth)		752	24,000
Air ticket home to/from CMU		940	30,000
Total		5,455	174,000
Grand Total:	Minimum	\$17,275.86	THB551,100.00

Health Insurance:

CMU requires that every international student residing in Thailand to purchase a health insurance covering the whole period of their studies, if they haven't got one already. SPP staffs, we will assist you find a good value package of health insurance. The package that we will offer to SPP students require you to pay the annual premium based on student's age.

Student will be responsible for paying the costs of the following items

1. Financial resources for living expenses, based on your personal needs. Please also refer to the breakdown of expected costs, [Read \(https://www.numbeo.com/cost-of-living/in/Chiang-Mai\)](https://www.numbeo.com/cost-of-living/in/Chiang-Mai), and details of in-campus and off-campus accommodation in the next section of this Handbook.
2. All your travel-related costs (and visa) and expenses incurred before your arrival at SPP.
3. Student Enrollment Fee, as of academic year 2022, it is included in the Tuition Fee. The Student Enrollment Fee covers institutional costs related to: maintaining the student status in the university's database systems, reporting required by Thai law, information technology services and financial services. The Fee entitles students to use computer labs, email and Internet access, and contributes to university residential life programs, student activities, and the activities of the Student Union.
4. Application Fee is incurred for those who are accepted at the rate of 900 Baht per application.

**Foreign applicants will be exempted for registration fee ([Read](#))*

<http://admission.grad.cmu.ac.th/admissions/indexeng.php?p=101&tab=5>



SPP-MA Scholarship (Thai Baht)

CMU-SPP Annual Cost Items		
As of Jan 2019		
Master in Public Policy		SPP MA Scholarship 1-year (Research Assistance) *Include Air ticket home
	Exam Fee (IELTS English test)	N/A
	Application Fee	900
	Tuition Fee (the whole program, payable in semester)	330,000
	Insurance (Health)	6,000
	Thesis publication cost	6,000
	Field Trip/Research/Project	15,000
	Books and Equipment	N/A
	Total	357,900
Cost of Living:		
	Rent (4k/mth)	48,000
	Bill & Electricity (1k/mth)	12,000
	Meals (5k/mth)	60,000
	Transportation (2k/mth)	24,000
	Air ticket home to/from CMU	30,000
	Total	174,000
Grand Total:	Minimum	THB531,900

STUDENTS HOUSING

Chiang Mai University housing service functions as educational dormitory for Learning, Living and Caring Center. Services are provided to the residency of colleges as well as those coming to use the facility as center of learning. There are various programs and activities which support career development of the students. Including academic tutor, foreign languages tutor, personality training, and specific career training. There are a lot of activities provided by the university housing services; the reading rooms, the computer rooms, the library, and the activities rooms which give the chance for students to get together. For example, the merit dormitory's activity, the dormitory room contention and volunteer activity. Moreover, the environment around dormitory is clean, beautiful, sylvan, and safe.

The University Dormitory Office operates a total of 19 dormitories consisting of six male dormitories, eleven female dormitories and a mix-gender dormitory, organized in two separate sections.

Website: <http://udo.oop.cmu.ac.th/eng/index.php>

Conditions for Application to Student Dormitories:

- Application can be made according to the process flow available via website <http://udo.oop.cmu.ac.th>
- Applicants are required to log-in with their student ID, (TCAS) used for Entrance Examination, to make reservation in the CMU system. Complete application has to be printed out and submitted to the University Dormitory Office during the July month.
- Students can apply for one dormitory building only.
- Information provided in the application form must be valid and complete.
- Students who enroll under the youth development programs for promoting excellence in sport have to apply for either Male Dormitory building 4 (4th floor) or Female Dormitory building 6 (4th floor).
- Motorcycles and cars are not allowed for use or store in the dormitories. Any violation will result in application being disqualified.

The [CMU network of dormitories outside](#) the campus is available to CMU students who are not qualified under the above application system. Monthly rental rate is ranging from THB3,500 - THB6,200 for single or double occupancies.

- [Uniloft Chiang Mai](#)
- หอพักสตรีบ้านเต็มจิต
- หอพักสตรีอารียาแมนชั่น
- หอพักสตรีล้านนาเฮือนดอกเอื้อง
- หอพักสตรีคุณนายเรสซิเดนซ์@สวนดอก
- หอพักสตรีพี แอนด์ ดี เฟลส
- [หอพักสตรีบ้านต้นทองกวาว](#)
- หอพักสตรีนันทรส
- [หอพักสตรีเรสซิเดนซ์ ฮิลล์](#)
- [หอพักสตรี @B-Wa](#)

INTERNATIONAL STUDENTS' ACCOMMODATION

The list from Chiang Mai University International College, International Students Affair.

- Lanna 3: Tel. 053 892 036
- Sa-Nguanmalee Mansion: Tel. 085-0380-058
- Petch Nhua Apartment: Tel. 053-811003
- Pear House: Tel. 083-544-0474
- Uniloft: <https://www.facebook.com/uniloftcnx/>
- Huaykaew Place: Tel. 053-212047
- Huay Kaew Condotel: Tel. 053-400243
- Paipana Mansion Chiangmai: Tel. 088-1398-454

Reference: https://udo.oop.cmu.ac.th/files/International_Students_Accommodation_Information.pdf